

MARK	SIZE	DESCRIPTION	QUANTITY
1	3'-0" x 6'-8"	EXTERIOR	2
2	2'-6" x 6'-8"	EXTERIOR	1
3	2'-6" x 6'-8"	EXTERIOR (GLASS)	1
4	2'-6" x 6'-8"	INTERIOR	5
5	2'-0" x 6'-8"	INTERIOR	1
6	2'-6" x 6'-8"	INTERIOR	1
7	5'-9" x 6'-8"	INTERIOR	1
8	7'-0" x 6'-8"	INTERIOR	1
9	8'-0" x 6'-8"	INTERIOR	2
10	3'-4" x 2'-0"	EXTERIOR ACCESS DOOR (DOB BUILT)	2

MARK	SIZE	DESCRIPTION	QUANTITY
A	2'-6" x 5'-11 3/4"	CASEMENT	9
B	2'-6" x 4'-11 3/4"	CASEMENT	4
C	2'-6" x 6'-8"	FIXED	1
D	10" x 6'-8"	FIXED (SIDE LIGHT)	1

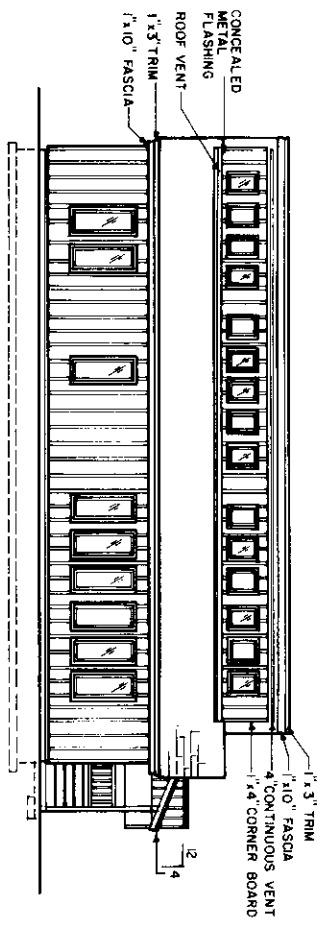
**FLOOR PLAN**

WINDOW SCHEDULE, INSULATED GLASS

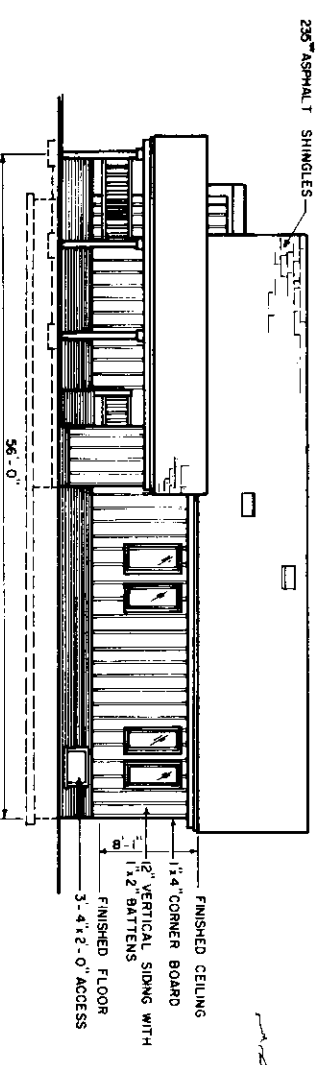
COOPERATIVE EXTENSION SERVICE  
 AGRICULTURE AND HOME ECONOMICS

UNITED STATES DEPARTMENT OF AGRICULTURE COOPERATING  
 AND  
 CONTEMPORARY 3-BEDROOM  
 SOLAR ATTIC HOUSE

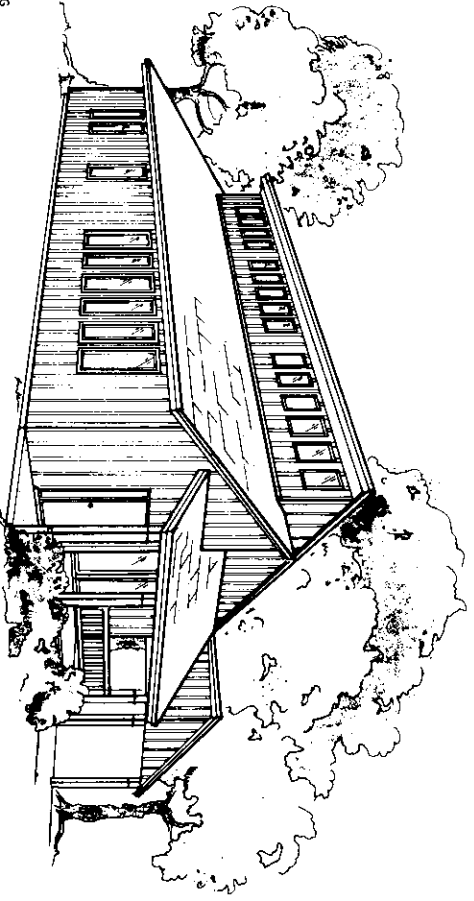
USDA 84 7250 SHEET 1 OF 7



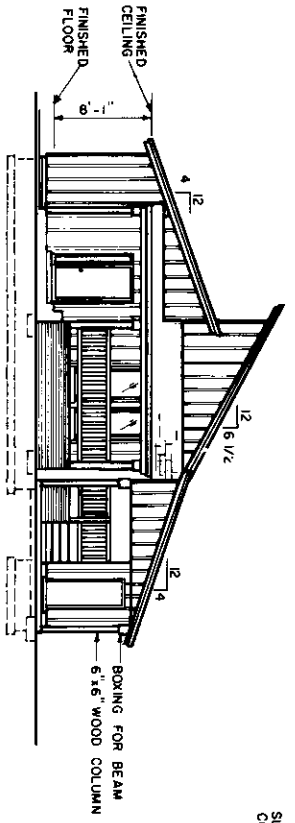
**SOUTH ELEVATION**



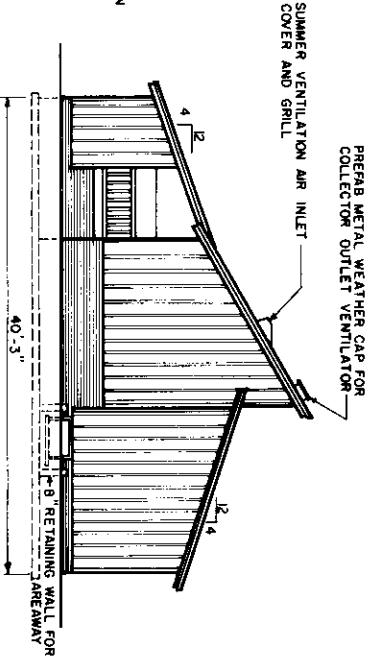
**NORTH ELEVATION**



**PERSPECTIVE (NO SCALE)**



**EAST ELEVATION**



**WEST ELEVATION**

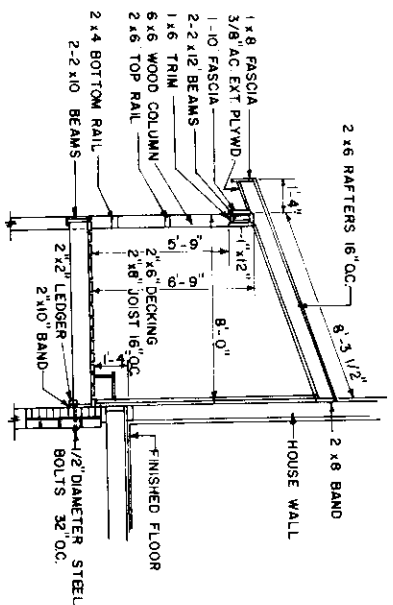
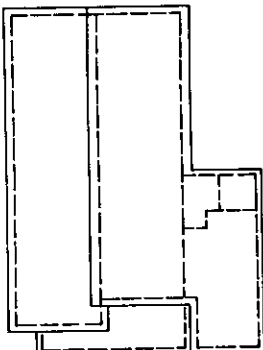


COOPERATIVE EXTENSION SERVICE AGRICULTURE AND HOME ECONOMICS		
AND UNITED STATES DEPARTMENT OF AGRICULTURE COOPERATING		
CONTEMPORARY 3-BEDROOM SOLAR ATTIC HOUSE		
USDA '84	7250	SHEET 2 OF 7



CONSTRUCTION CHECK LIST

1. CHECK LOCAL BUILDING CODE AND LOAD CRITERIA ( RAFTERS MEET 20 LB/FT<sup>2</sup> SNOW LOAD CRITERIA).
2. ADEQUATELY NAIL AND ANCHOR JOINTS.
3. DOUBLE JOISTS UNDER TRUS AND OTHER HEAVY LOADS.
4. SHEATH CORNERS WITH 1/2" PLYWOOD OR HIGH DENSITY FIBERBOARD OR USE DIAGONAL BRACING
5. USE EXTERIOR GULLED PLYWOOD WHEREVER IT MAY BE WETTED DURING OR AFTER CONSTRUCTION.
6. PRESSURE TREAT ALL WOOD WITH GROUND CONTACT AND PROVIDE OTHER NEEDED TERMITE CONTROL.
7. PROVIDE 1 SQ FT OF ATTIC VENT OPENINGS FOR EACH 150 SQ FT OF CEILING.
8. WEATHERIZE ALL OPENINGS AND JOINTS.
9. SEAL CRACKS WHERE DUCT WORK PASSES THRU WALL OR FLOOR OF MECHANICAL SPACE WITH SILICONE SEALANT.
10. SPACE WITH SILICONE SEALANT.
11. FILL CORES OF TOP COURSE MASONRY WITH CONCRETE.
12. FILL CORES OF MASONRY WITH CONCRETE AT ANCHOR BOLT LOCATIONS.

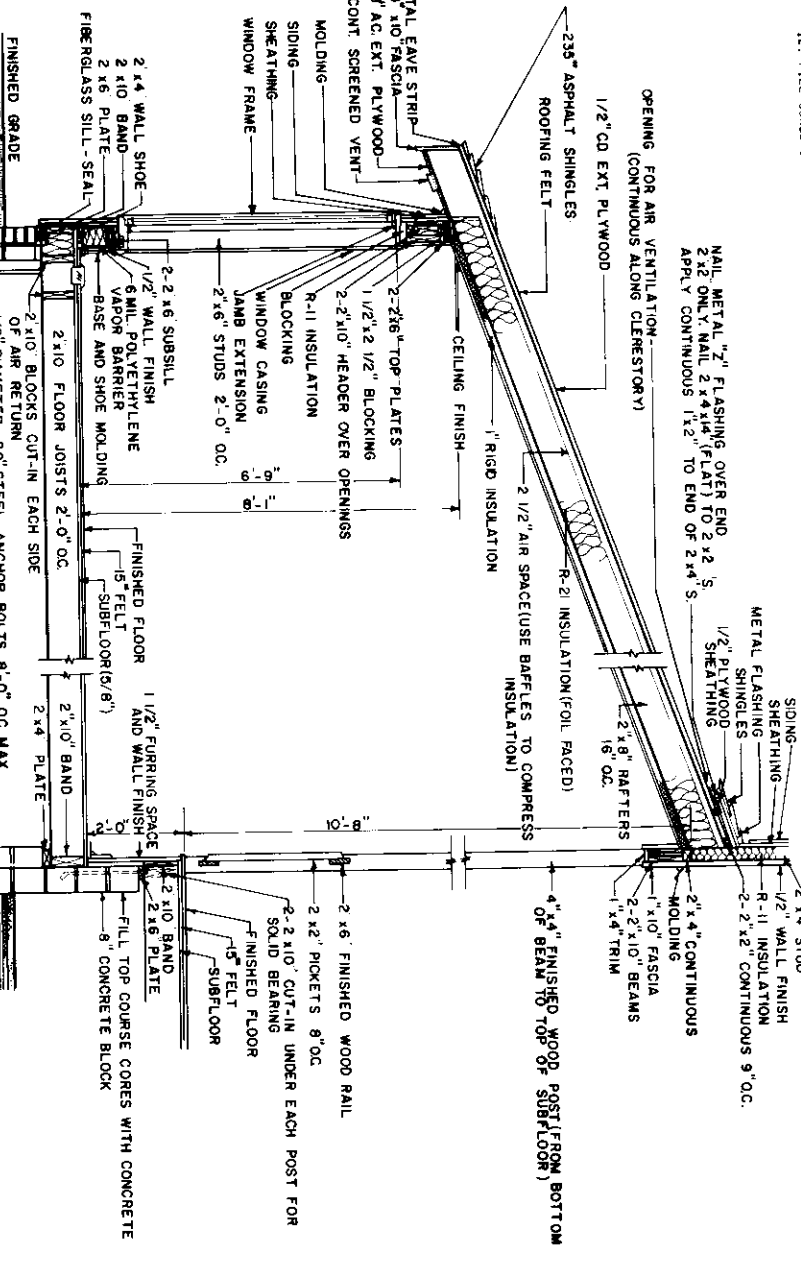


SECTION THRU PORCH 403

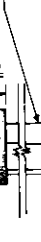


SCALE

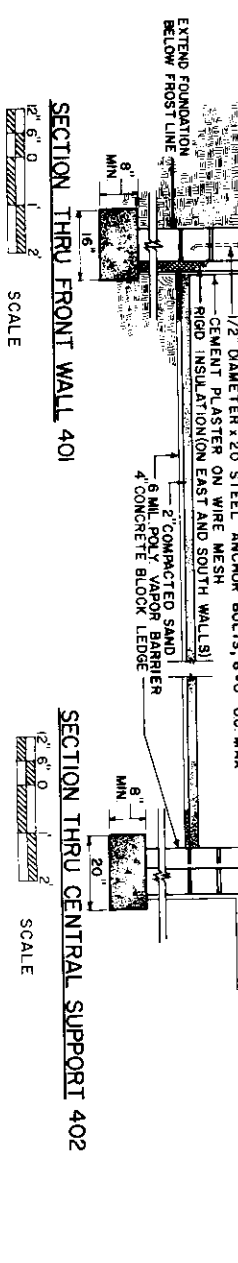
MECHANICAL SCHEDULE	
a.	12"x24" METAL SUPPLY DUCT TO ROCK STORAGE
b.	12"x24" METAL SUPPLY DUCT TO FURNACE
c.	12"x24" METAL SUPPLY DUCT TO HOUSE DISTRIBUTION SYSTEM
d.	FURNACE
e.	BLOWER
f.	4"x20" AIR RETURN REGISTERS
g.	16"x12" AIR RETURN GRILLE FROM CLOSETORY TO COLLECTOR DAMPER WITH MANUAL CLOSURE ON CLOSETORY SIDE AND FLAP DAMPER ON COLLECTOR SIDE
h.	12"x20" THERMOSTATICALLY CONTROLLED COLLECTOR SPACE VENTILATOR: DAMPER OPENS AT 160 - CLOSSES AT 140 (WINTER) CONTINUOUSLY OPEN (SUMMER)
i.	4"x20" METAL AIR SUPPLY DUCT
j.	6"x20" METAL AIR SUPPLY DUCT
k.	4"x20" AIR RETURN GRILLE
l.	4" CONTINUOUS AIR SLOT IN WALL TO ALLOW AIR TO ENTER COLLECTOR SPACE
m.	4" CONTINUOUS AIR SLOT IN WALL TO ALLOW AIR TO ENTER COLLECTOR SPACE
n.	4"x20" METAL AIR RETURN DUCT
o.	4"x20" AIR SUPPLY REGISTER



SECTION THRU CENTRAL SUPPORT 402



SCALE



SECTION THRU FRONT WALL 401

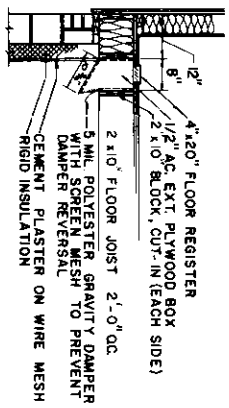


SCALE

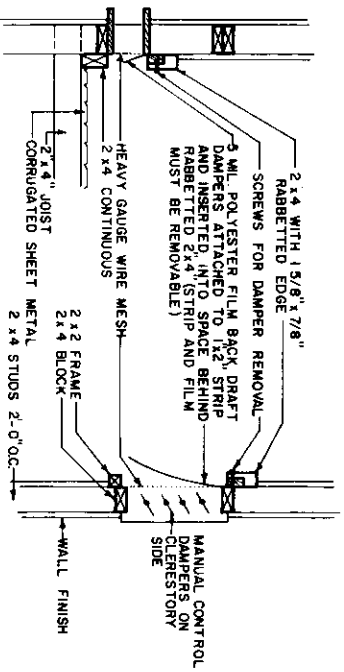
COOPERATIVE EXTENSION SERVICE  
 AGRICULTURE AND HOME ECONOMICS

UNITED STATES DEPARTMENT OF AGRICULTURE COOPERATING  
 AND  
 CONTEMPORARY 3-BEDROOM  
 SOLAR ATTIC HOUSE

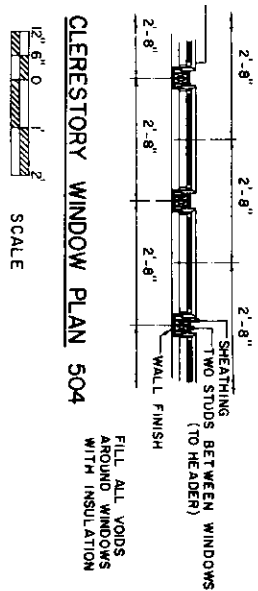
USDA 84 7250 SHEET 4 OF 7



FLOOR RETURN 502



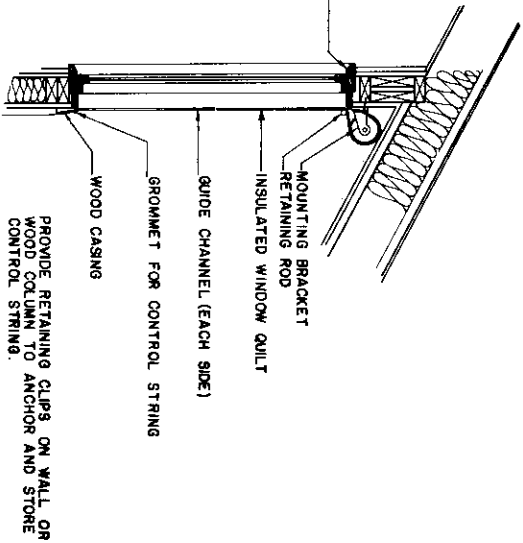
AIR RETURN FOR CLERESTORY



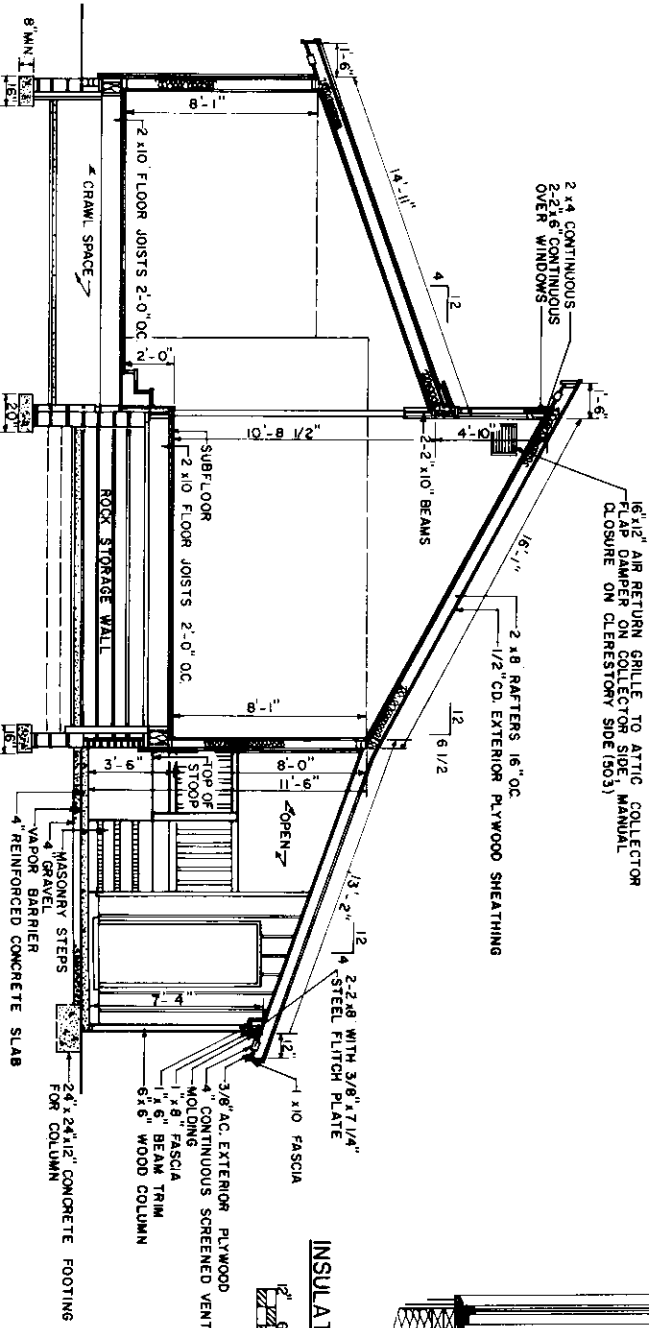
CLERESTORY WINDOW PLAN 504



FLAP DAMPERS 503



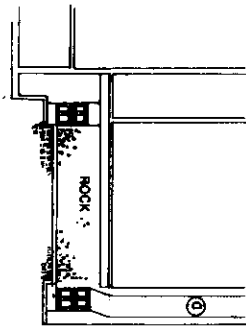
INSULATION FOR CLERESTORY WINDOWS 505



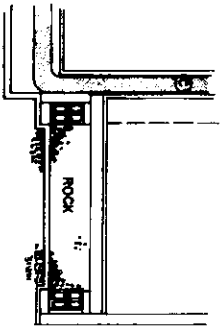
TRANSVERSE SECTION THRU LIVING ROOM, DINING ROOM, AND CARPORT 501



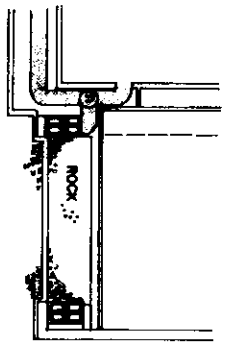
UNITED STATES DEPARTMENT OF AGRICULTURE COOPERATING			
AND			
COOPERATIVE EXTENSION SERVICE			
AGRICULTURE AND HOME ECONOMICS			
TEMPORARY 3-BEDROOM			
SOLAR ATTIC HOUSE			
USDA 84	7250	SHEET 5 OF 7	



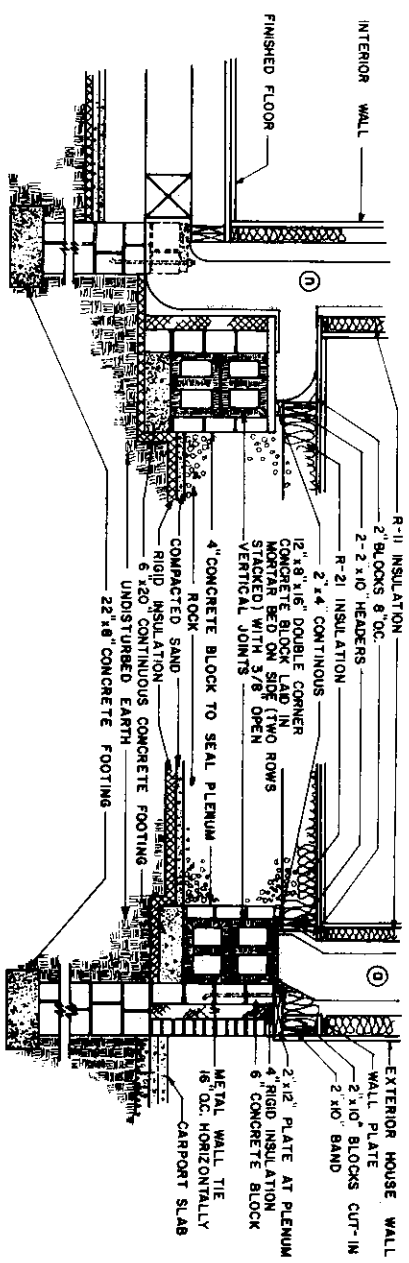
SECTION 602A



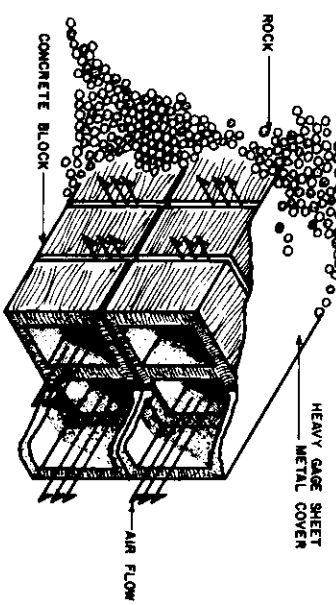
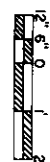
SECTION 602B



SECTION 602C



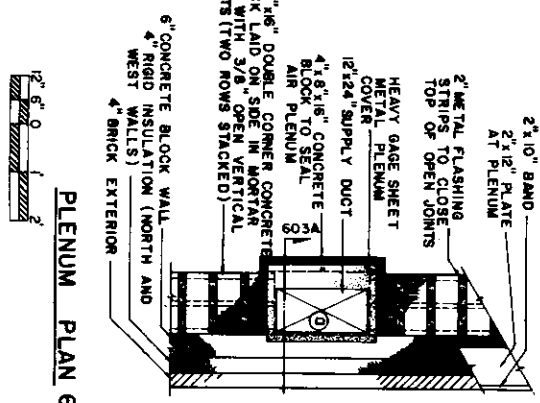
PLENUM SECTION 603B



PLENUM VIEW (NO SCALE)  
ILLUSTRATION OF AIR DISTRIBUTION FROM PLENUM TO ROCK STORAGE



PLENUM SECTION 603A



PLENUM PLAN 604



UNITED STATES DEPARTMENT OF AGRICULTURE COOPERATING			
COOPERATIVE EXTENSION SERVICE			
AGRICULTURE AND HOME ECONOMICS			
CONTEMPORARY 3-BEDROOM			
SOLAR ATTIC HOUSE			
USDA '84	7250	SHEET 6 OF 7	

